

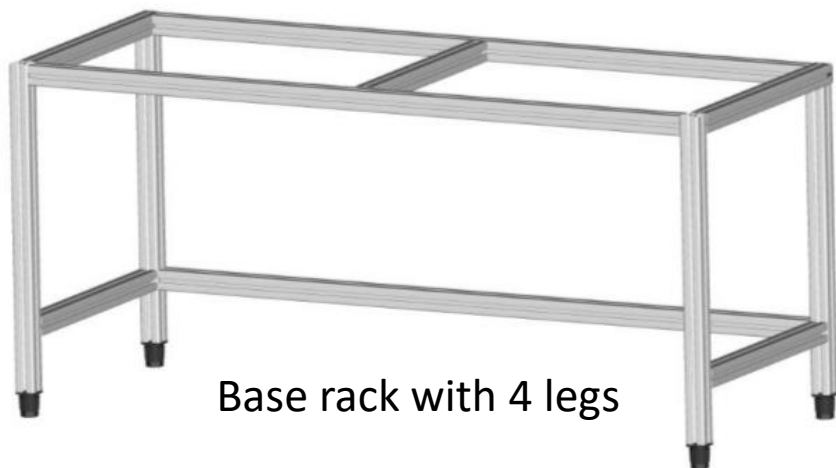


# WORKSTATION - CONCEPTS





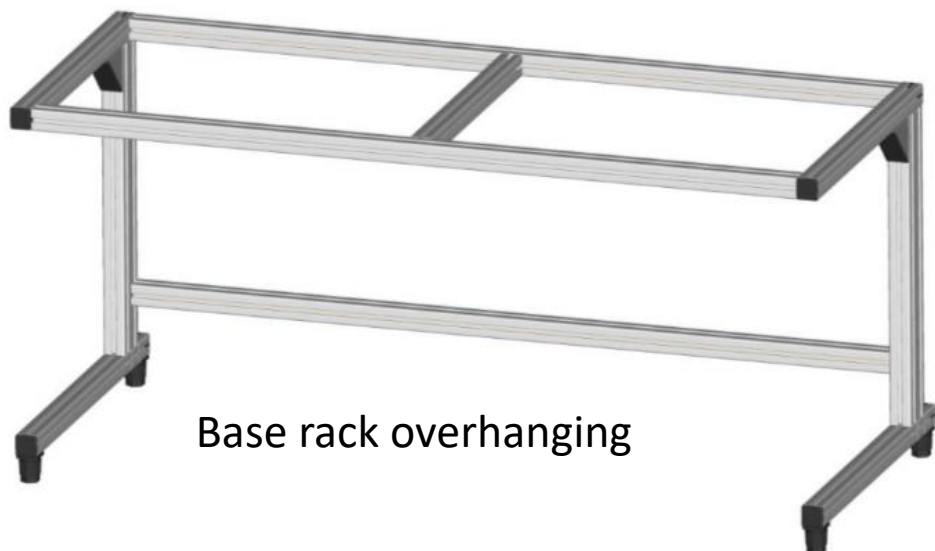
## BASE RACKS



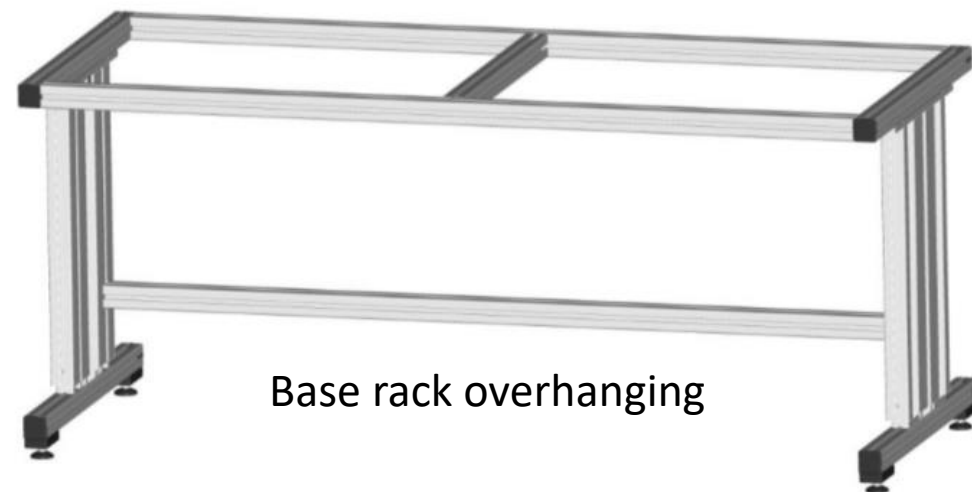
Base rack with 4 legs



Base rack with 2 legs



Base rack overhanging



Base rack overhanging



## TABLE SURFACES



Table surface with  
steel balls



HPL - Full plastic board



Laminated wood boards



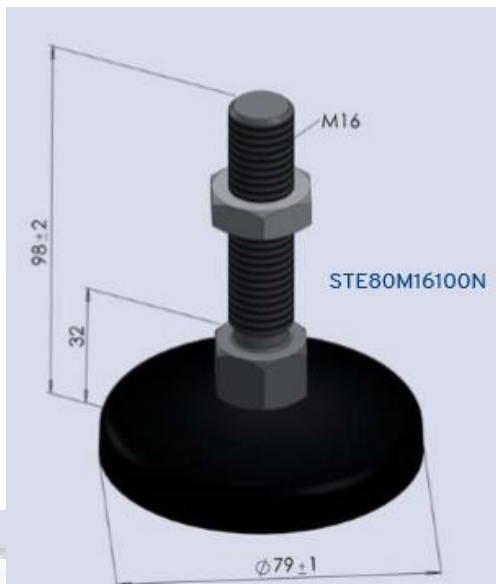
Table surface  
with brushes





## FEETS

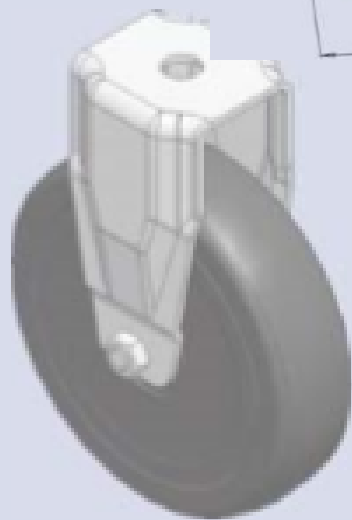
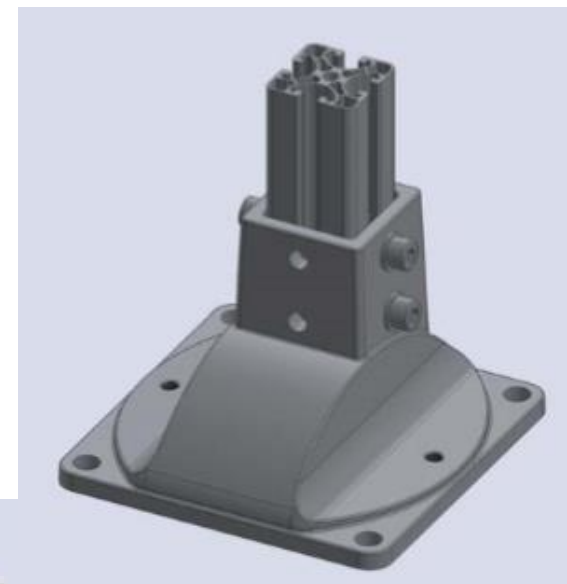
Feet



Angle feet, adjustable



Post  
console



Castor



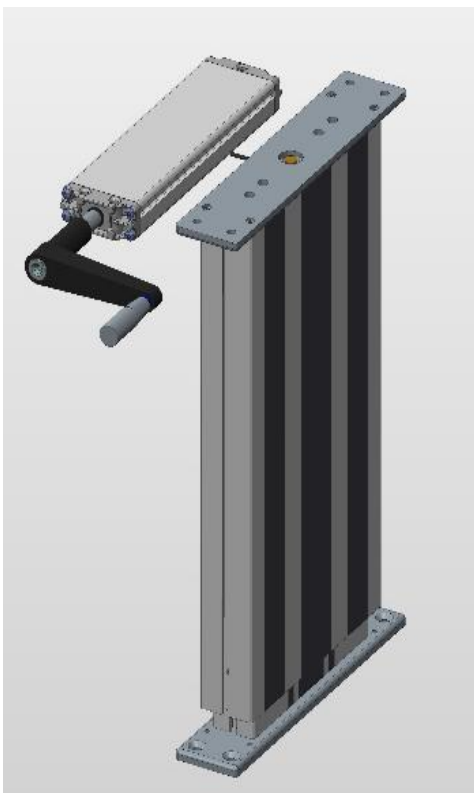
Castor  
without  
locking device



Castor  
with  
locking device



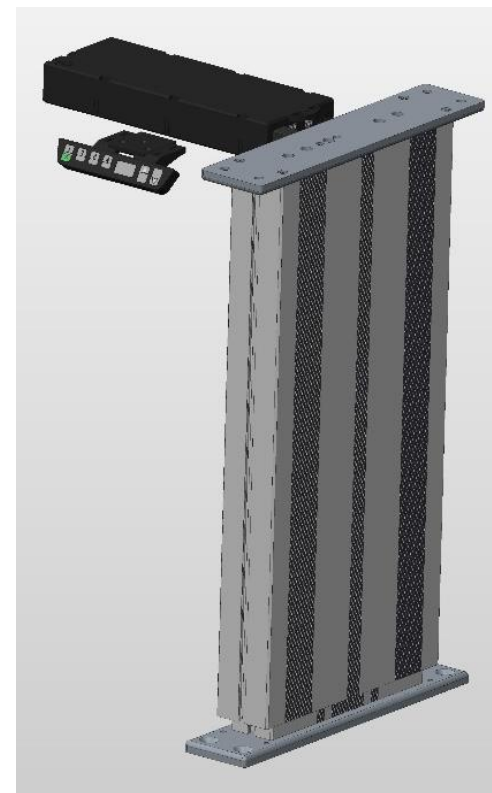
## HEIGHT ADJUSTMENT



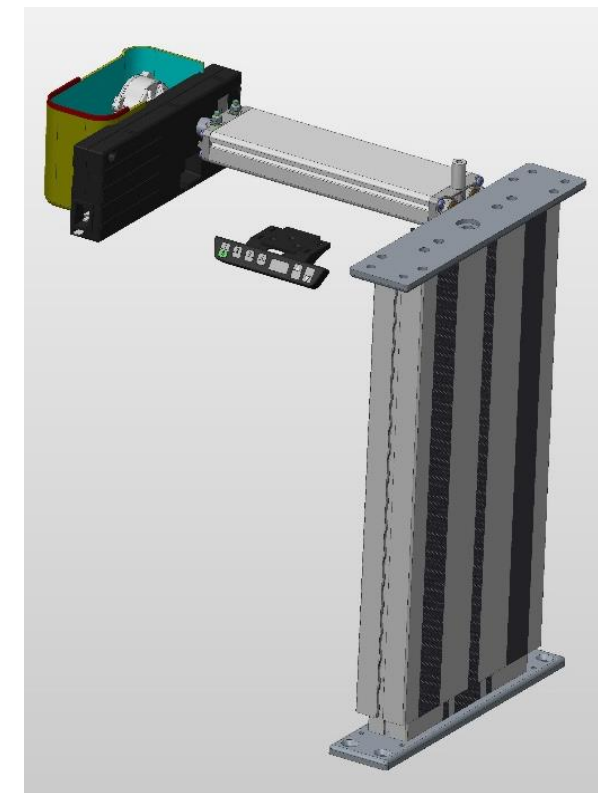
Hydraulic lifting device  
with hand crank



Hydraulic lifting device  
with hand crank



Elektro-spindle  
height adjustment



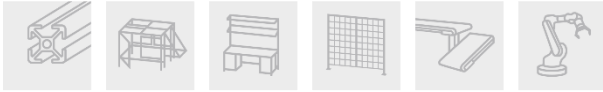
Hydraulic height adjustment  
with memory control



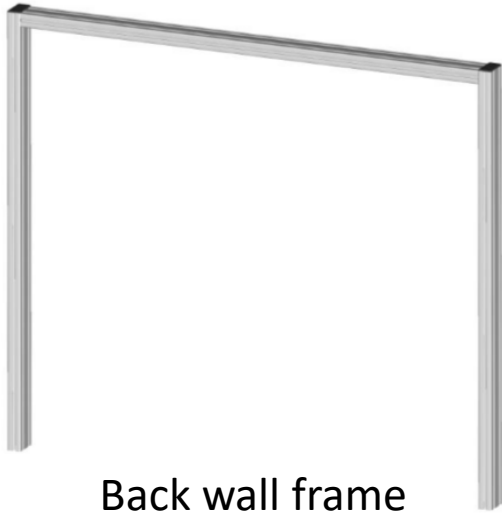


## SHELVES





## UPPER ASSEMBLIES (Examples)



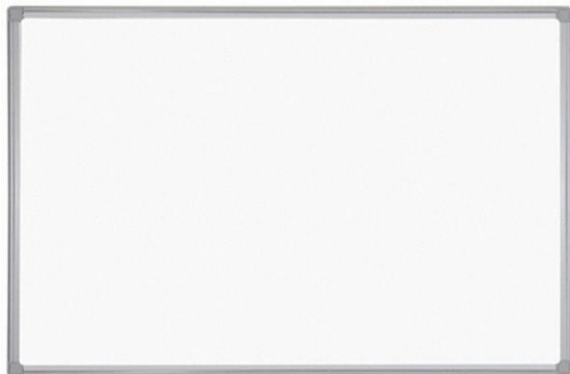
Back wall frame



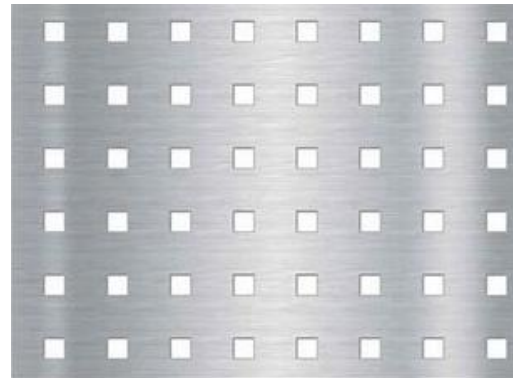
Cantilever, gallow single



Cantilever, gallow double



Back wall, Whiteboard



Back wall, Perforated sheet



Back wall, Cork



HPL – Full plastic board



## BACK WALL CONFIGURATION



Map holder



Plan pocket

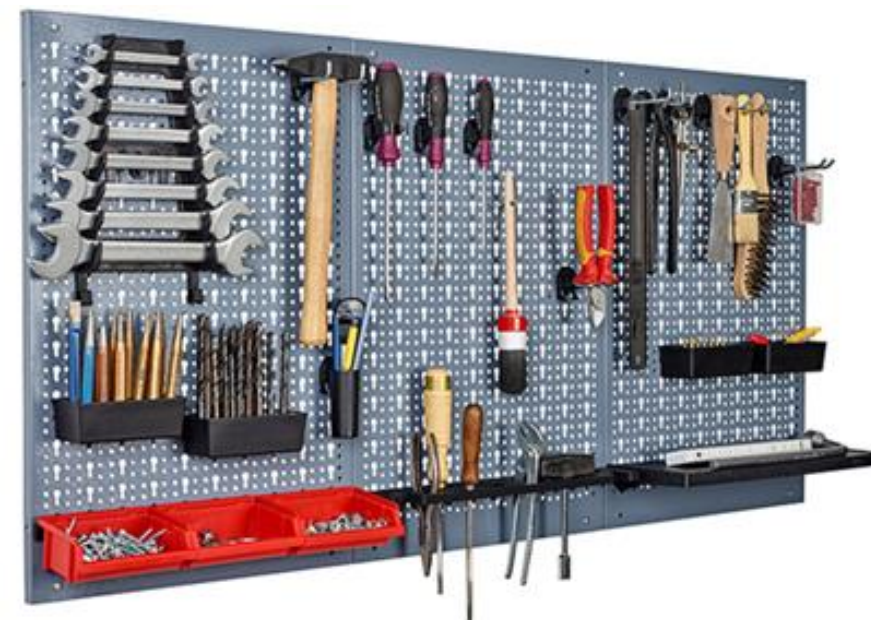


Document storage

Ballancer with automatic coil



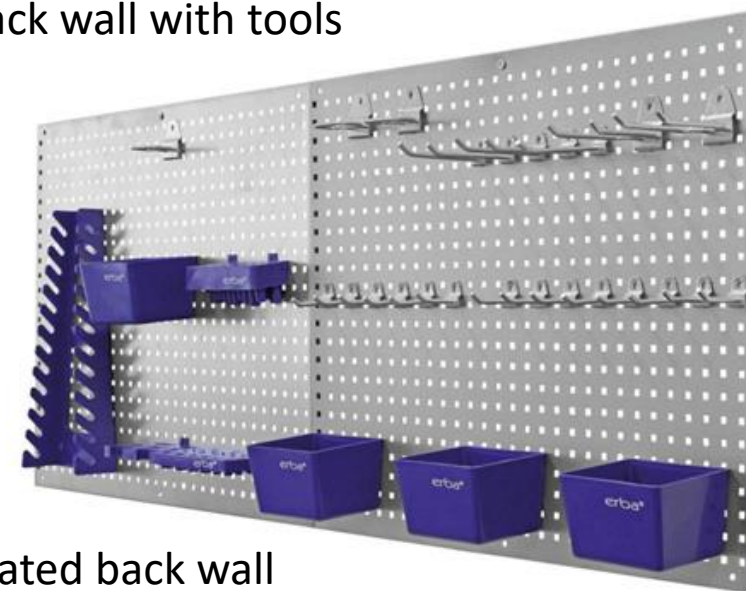
Tool slide



Back wall with tools



Magnetic band



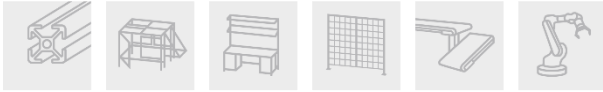
Perforated back wall





## BACK WALL MOUNTING

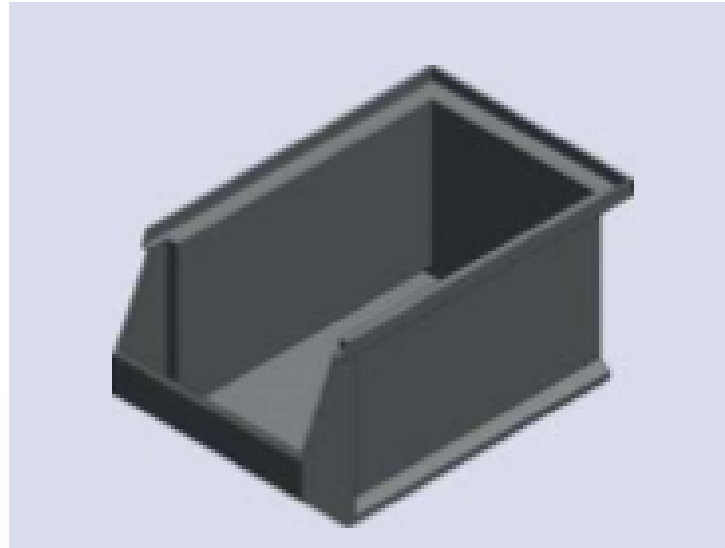




## MATERIAL SUPPLY - BINS



Shell type bin



Standard storage bin



Euronorm bin



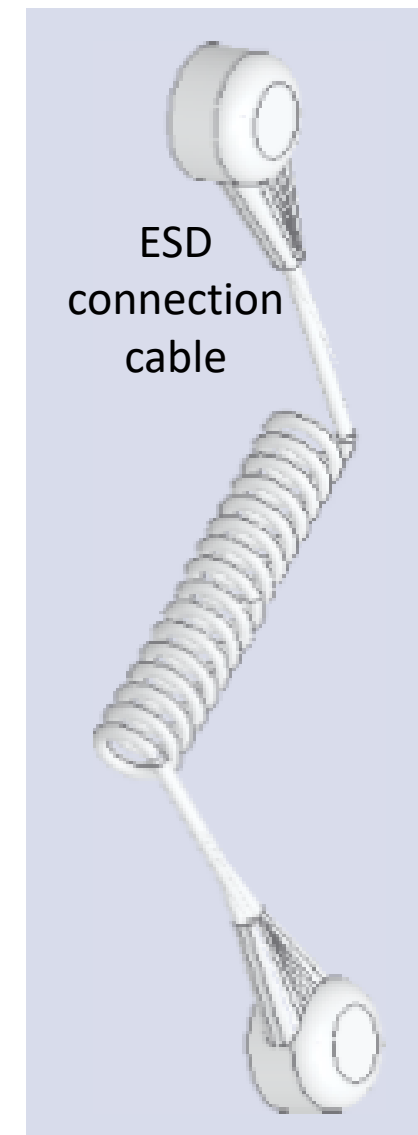
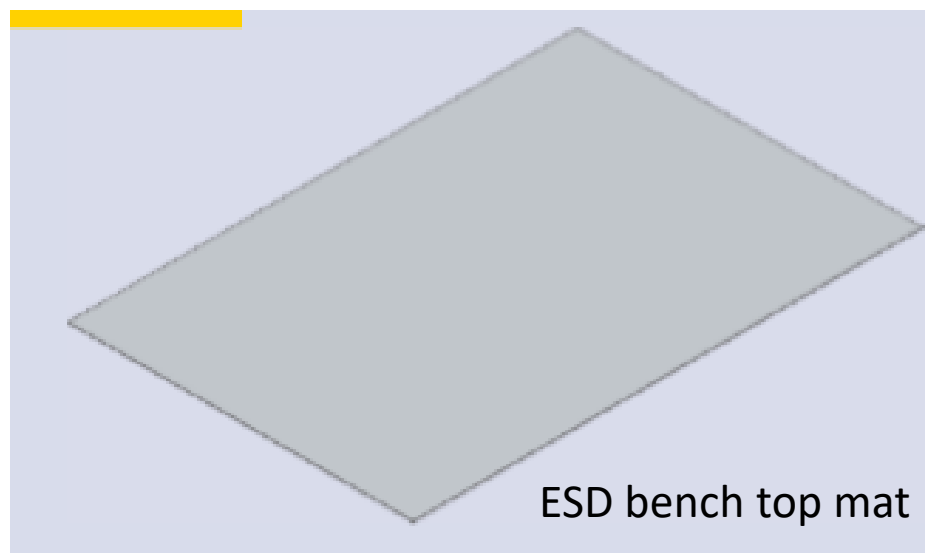
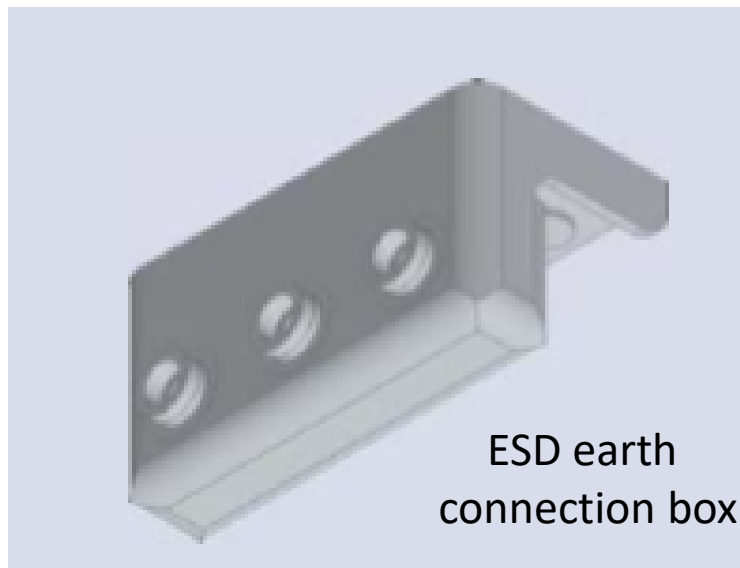
Bin 8



Bin 8



## ESD EQUIPMENT





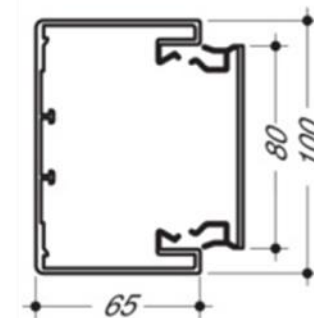
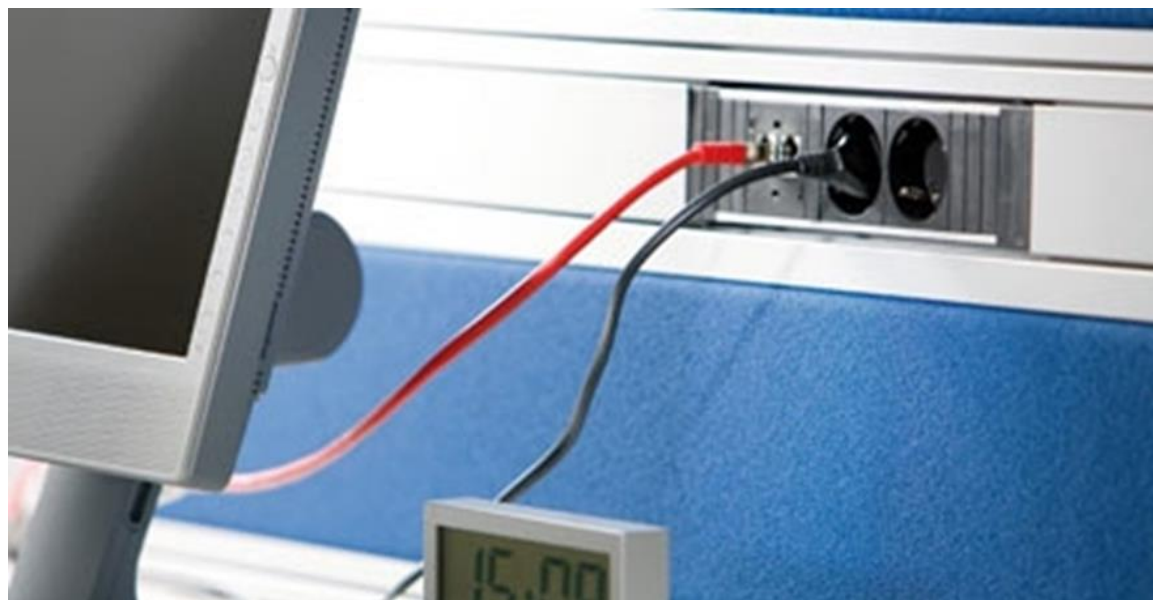
## ELECTRICITY SUPPLY





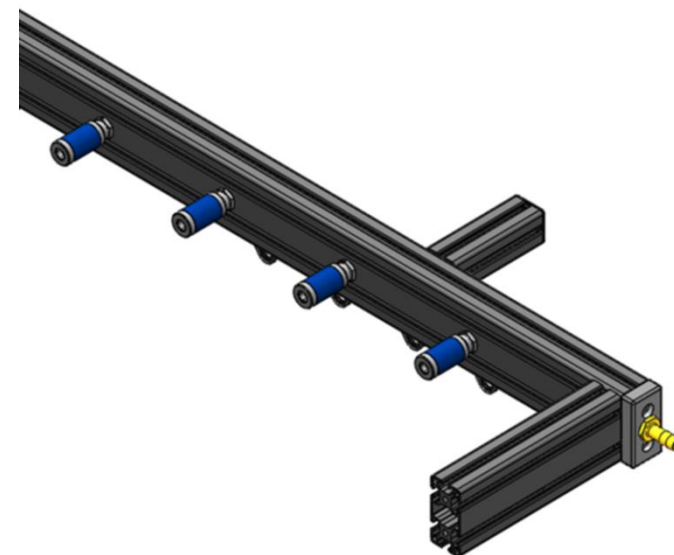
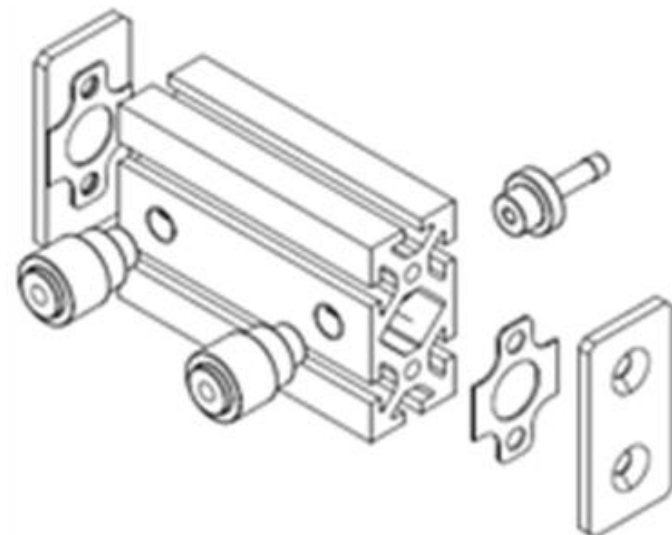
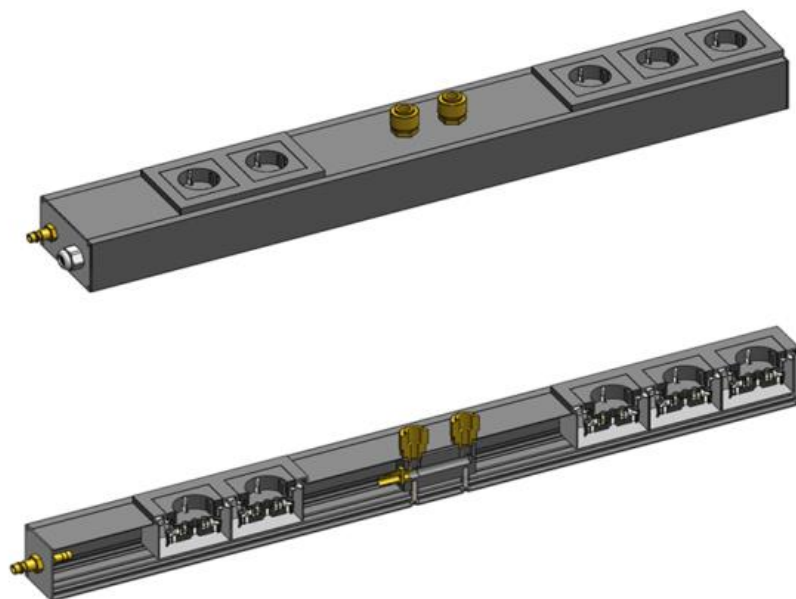


## ELECTRICITY SUPPLY





## COMPRESSED AIR SUPPLY





## MEDIA SUPPLY



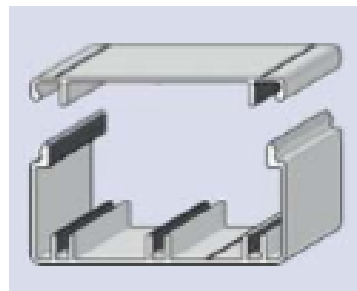
RJ 45 Pin



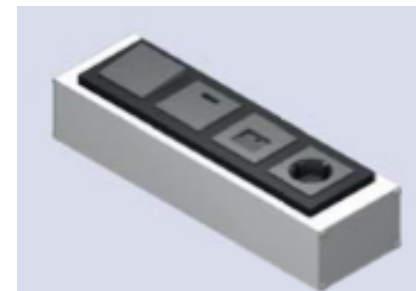
HDMI Pin



USB 3.0



GIRA Medisinlets



Multimediaschannel







## PC-MONITOR-PRINTER



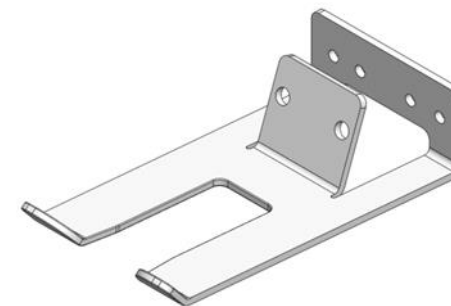
PC holder



PC holder



Laptop holder



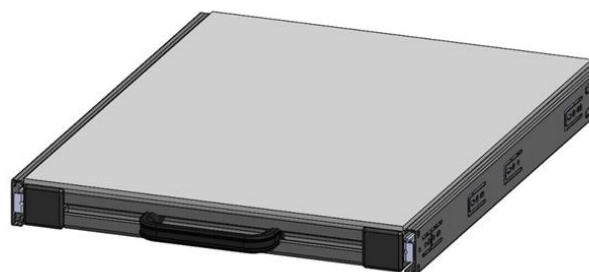
Scanner holder



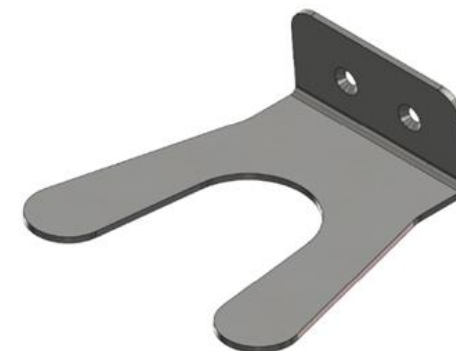
Swivelling arm with  
key board holder



Key board pullout

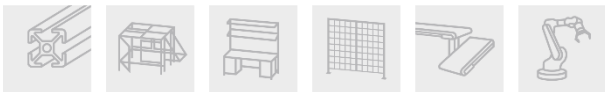


Flat pullout under table

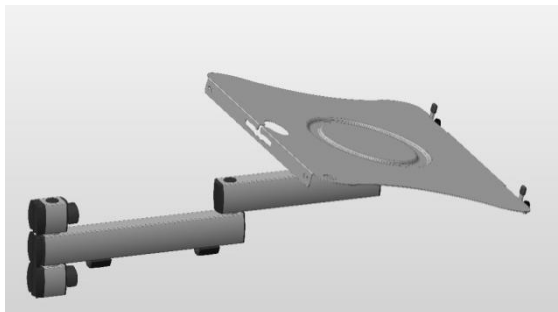
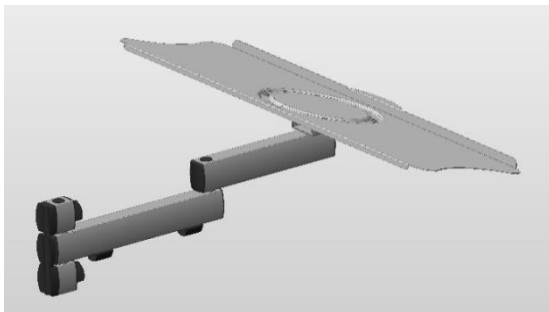


Scanner holder





## MONITOR HOLDERS – VESA NORM



### Bekannte VESA-Normen sind:

| VESA-Norm    | Gewindeabstand horizontal | Gewindeabstand vertikal |
|--------------|---------------------------|-------------------------|
| VESA 75x75   | 75 mm                     | 75 mm                   |
| VESA 100x100 | 100 mm                    | 100 mm                  |
| VESA 200x100 | 200 mm                    | 100 mm                  |
| VESA 200x200 | 200 mm                    | 200 mm                  |
| VESA 300x100 | 300 mm                    | 100 mm                  |
| VESA 300x200 | 300 mm                    | 200 mm                  |
| VESA 300x300 | 300 mm                    | 300 mm                  |
| VESA 400x100 | 400 mm                    | 100 mm                  |
| VESA 400x200 | 400 mm                    | 200 mm                  |
| VESA 400x300 | 400 mm                    | 300 mm                  |
| VESA 400x400 | 400 mm                    | 400 mm                  |
| VESA 600x200 | 600 mm                    | 200 mm                  |
| VESA 600x300 | 600 mm                    | 300 mm                  |
| VESA 600x400 | 600 mm                    | 400 mm                  |
| VESA 800x200 | 800 mm                    | 200 mm                  |
| VESA 800x300 | 800 mm                    | 300 mm                  |
| VESA 800x400 | 800 mm                    | 400 mm                  |



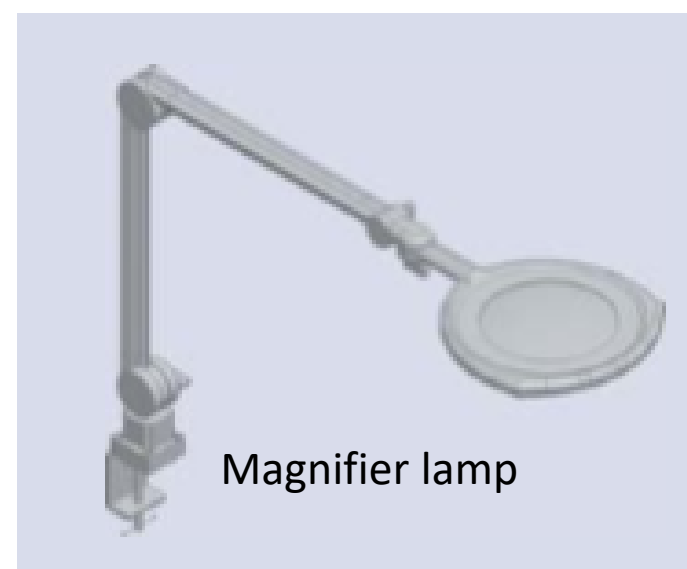
## ILLUMINATION



LED  
lamp, turnable



LED lamp,  
lateral



Magnifier lamp

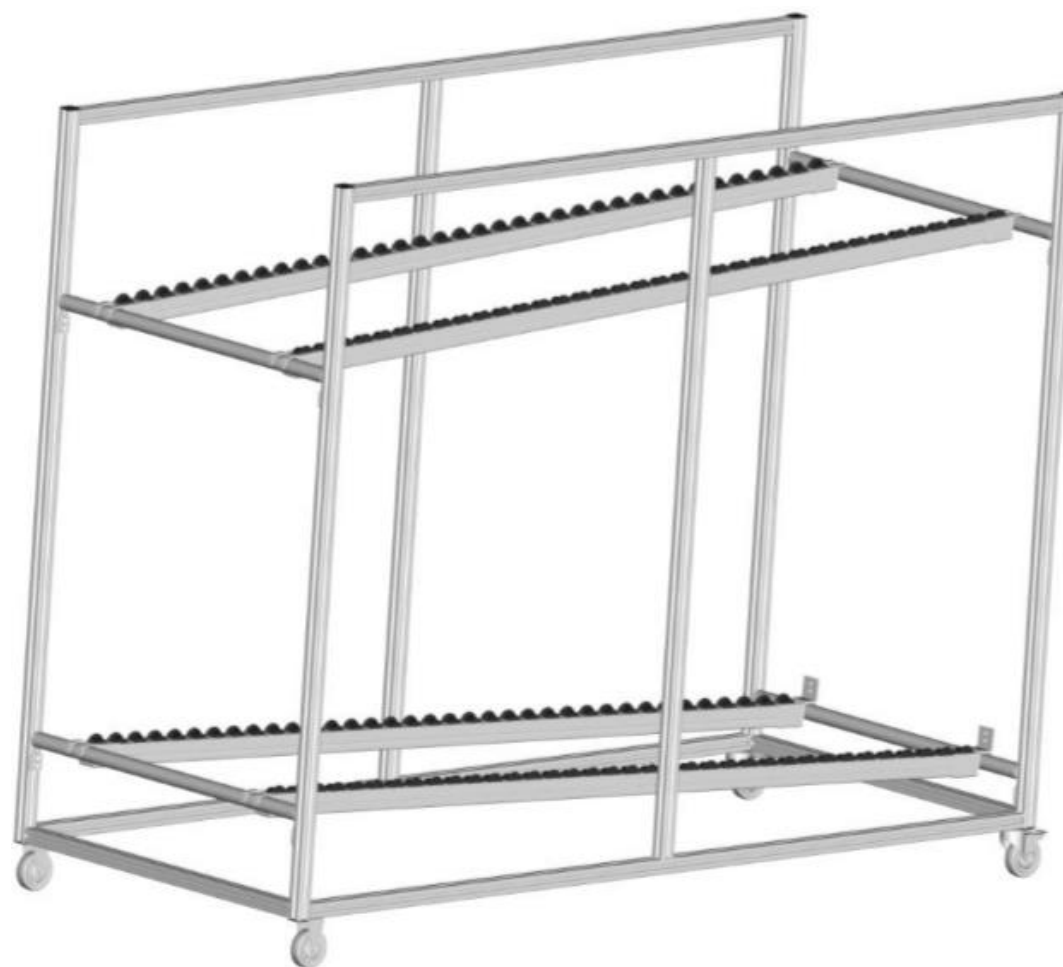


LED  
lamp,  
fixed

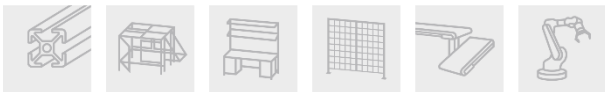




## MATERIAL SUPPLY CARTS and SYSTEM CARTS







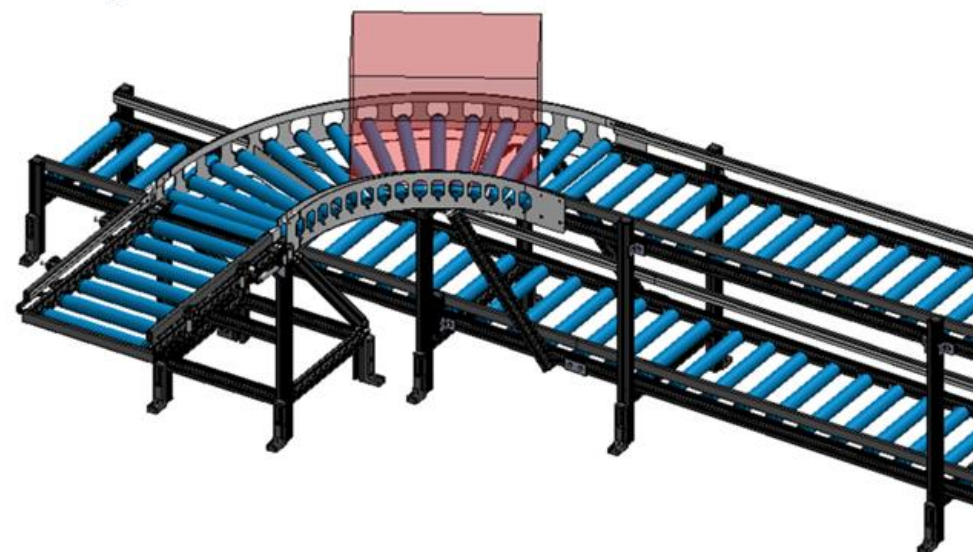
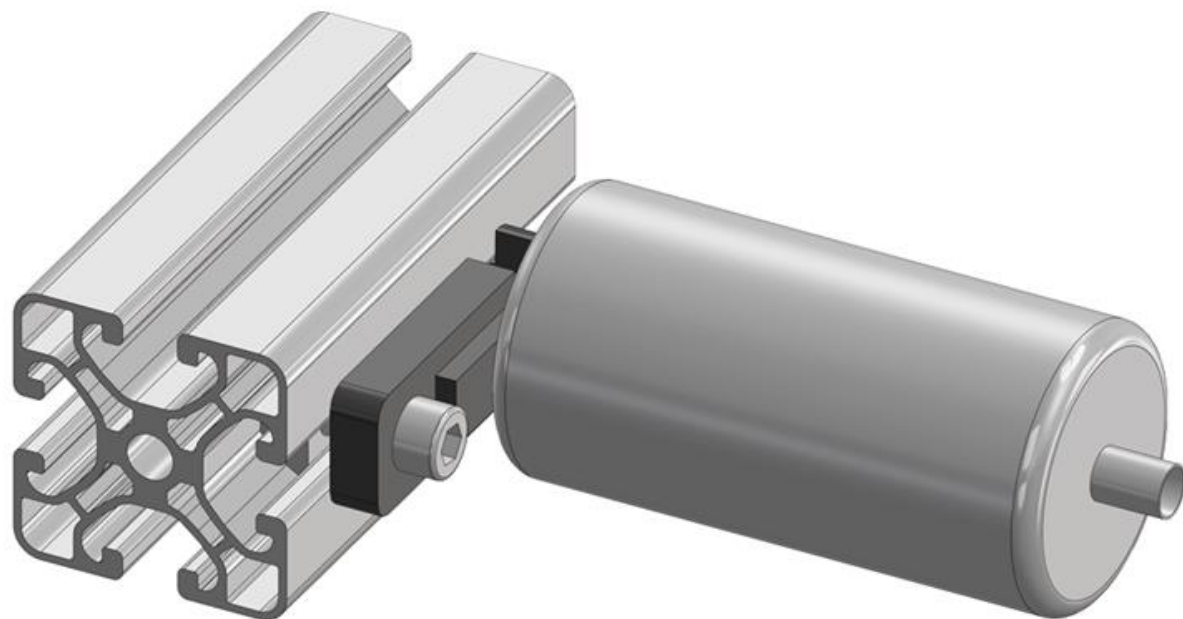
## ROLLER RAIL SYSTEMS





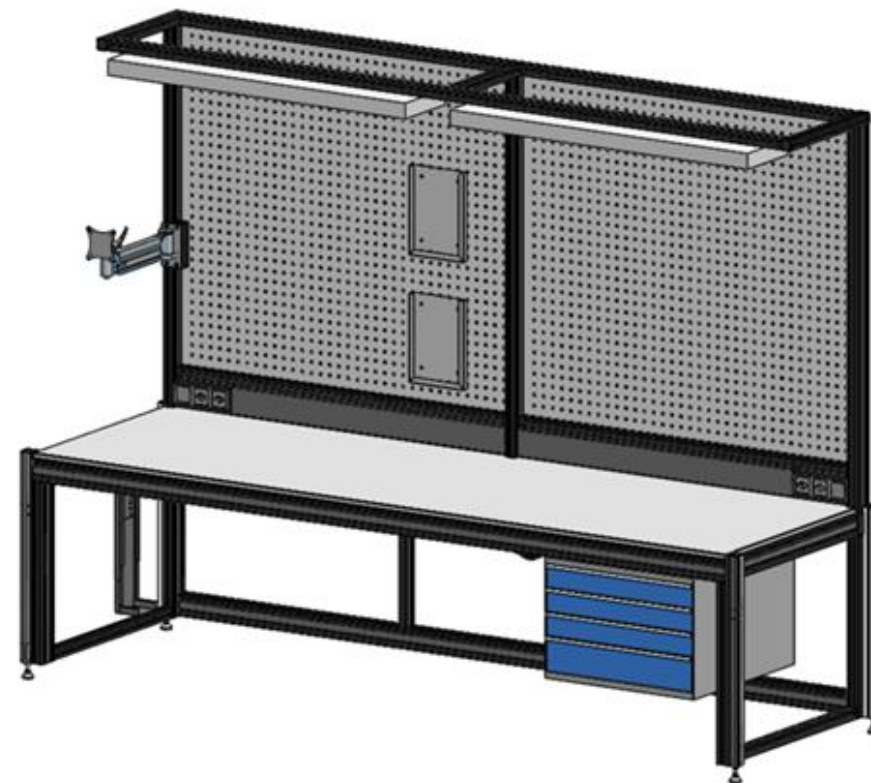
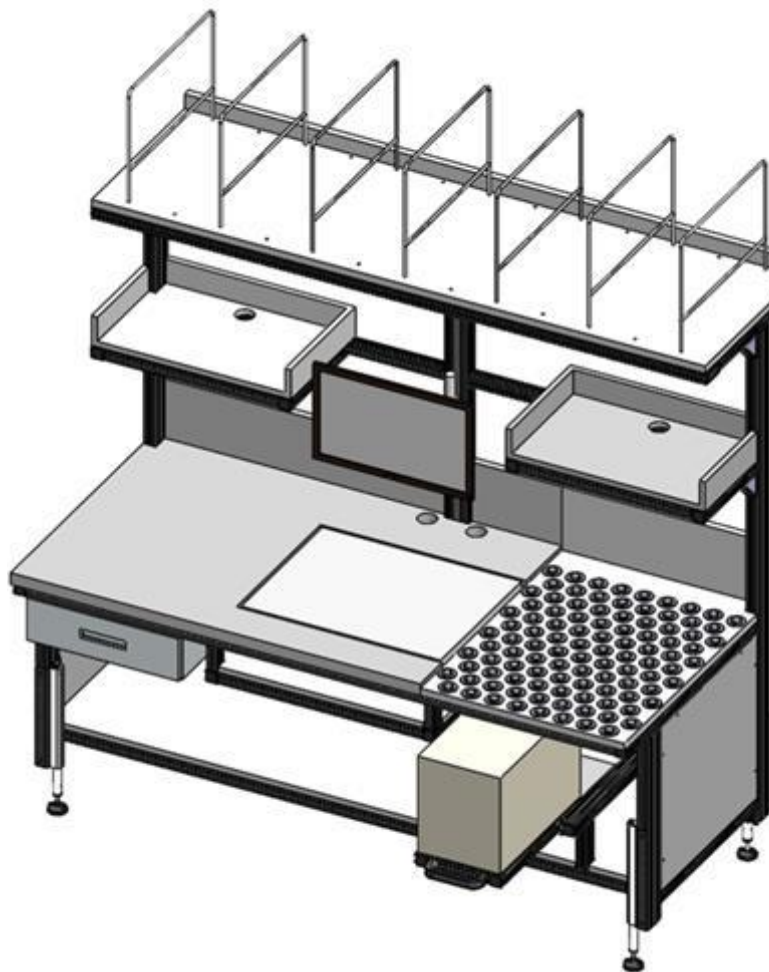
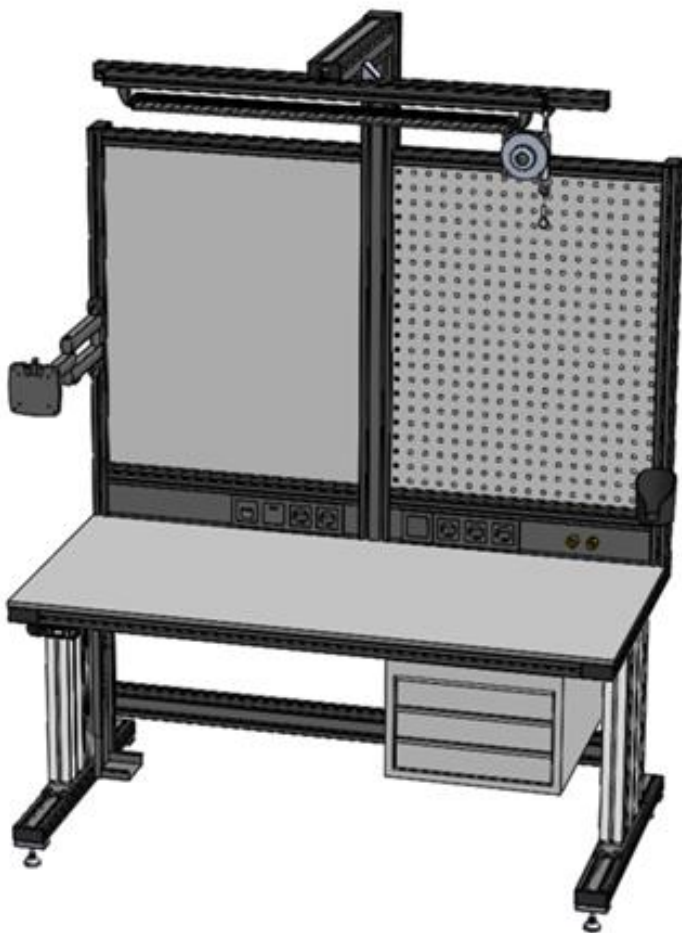


## ROLLER TRACKS

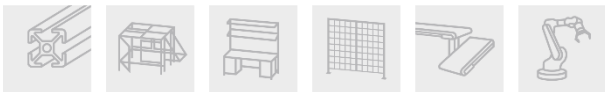




## WORKBENCHES - EXAMPLES





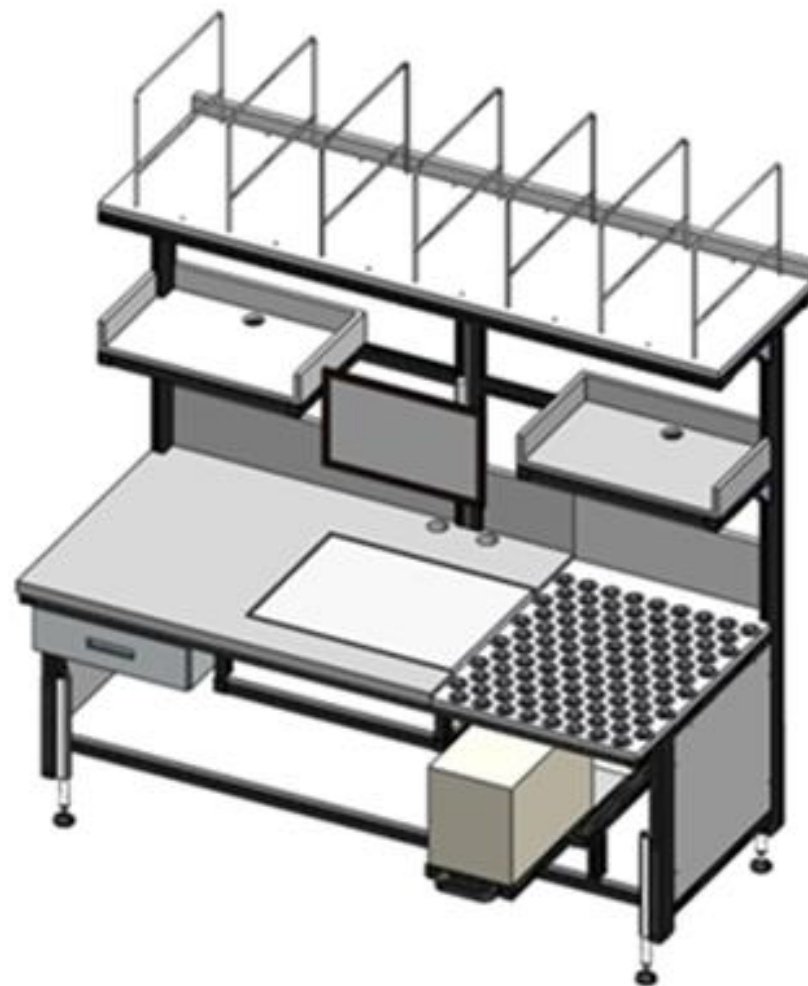


## INDUSTRIAL WORKSTATIONS – LEAN MANAGEMENT

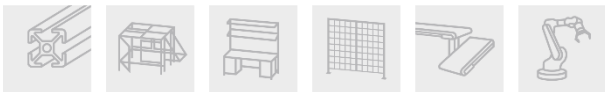




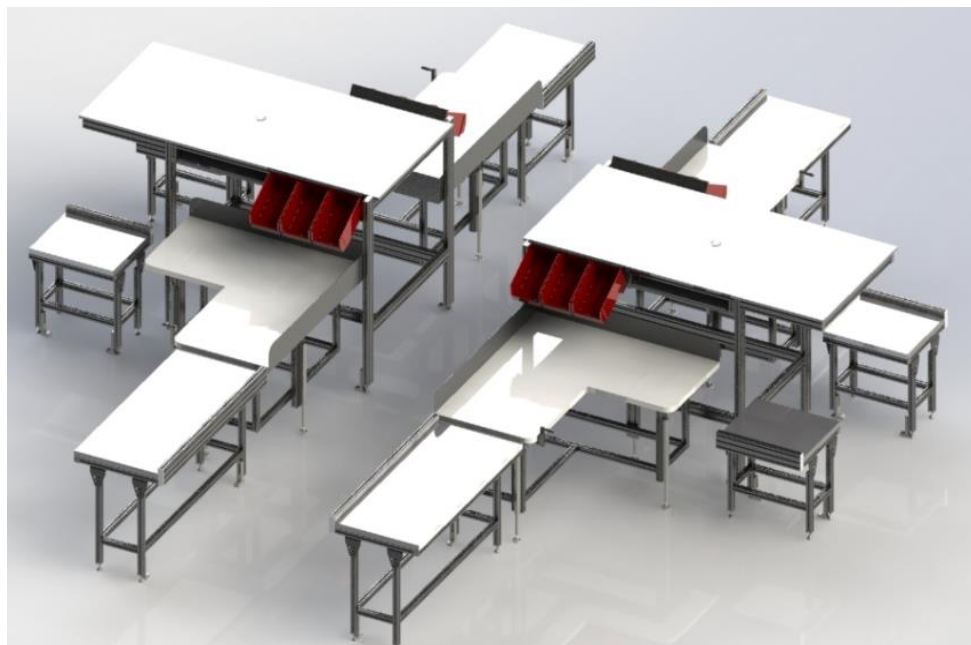
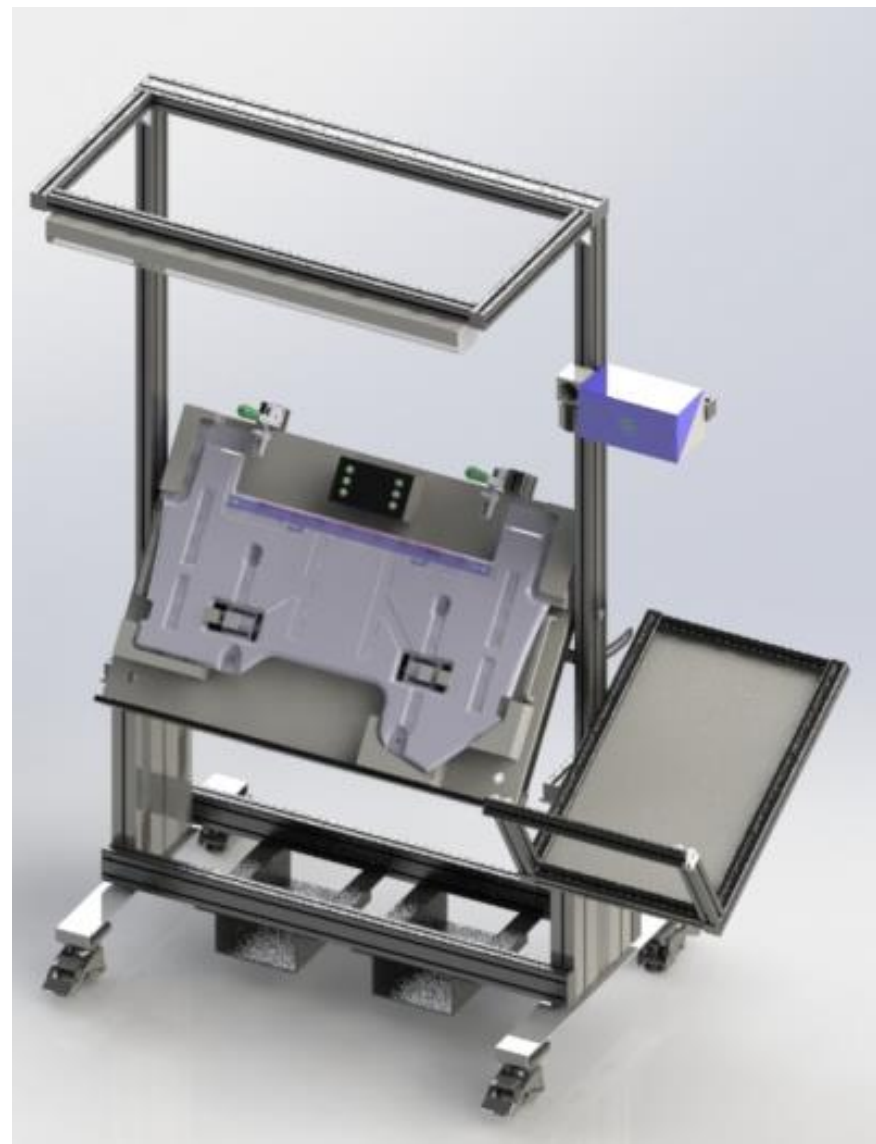
## PACKING TABLES







## INDUSTRIAL WORKSTATIONS – LEAN MANAGEMENT





## INDUSTRIAL WORKSTATIONS – LEAN MANAGEMENT

